

beech



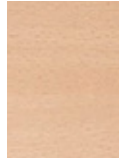
NL- 0
beech
urethane finish
whitish



EC- 1
beech
urethane finish
mat black

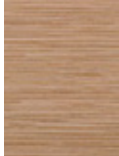


EA- 1
beech
urethane finish
mat white

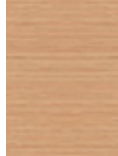


NJ- 1
beech
oil finish
whitish

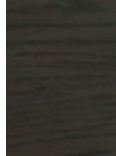
oak



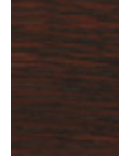
C- 0
oak
urethane finish
clear



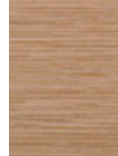
NL- 0
oak
urethane finish
whitish



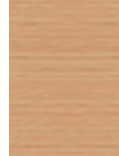
NK- 1
oak
urethane finish
natural black



MR- 1
oak
urethane finish
rose brown

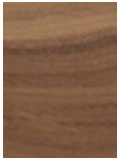


NB- 1
oak
oil finish
clear

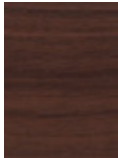


NJ- 1
oak
oil finish
whitish

walnut



C- 0
walnut
urethane finish
clear

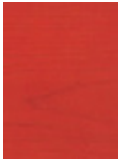


WB- 1
walnut
urethane finish
light brown

maple



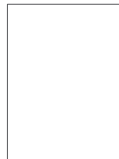
C- 0
maple
urethane finish
clear



ND- 1
maple
urethane finish
natural red



NK- 1
maple
urethane finish
natural black



EA- 1
maple
urethane finish
mat white

ash



C- 0
ash
urethane finish
clear

cedar

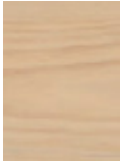


NL-0
cedar
urethane finish
whitish



NJ-1
cedar
oil finish
whitish

pine



pine
no finish

corian®



DuPont™
corian®
cameo white

steel



black
steel
powder coated



green
steel
powder coated



red
steel
powder coated

steel



black
steel
melamine resin
coating

MATERIALS

fabric M-02 : MIX FLANO

wool 90% nylon 10% (JAPAN)

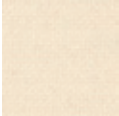


#4099 /#7099
gray

abrasion resistance: 50,000 rubs

fabric M-02 : FRANK

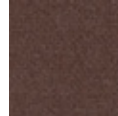
wool 90% nylon 10% (JAPAN)



#4235
ivory



#4236
beige



#4232
dark brown



#4230
dark blue



#4240
navy



#4243
smoke blue



#4241
green



#4239
garnet



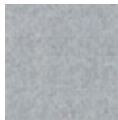
#4238
deep red



#4237
red



#4229
dark gray



#4369
light gray

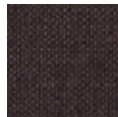
abrasion resistance: 50,000 rubs

fabric M-02 : BALI

cotton 16% rayon 67% linen 15% silk 2% (ITALY)



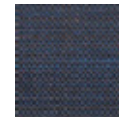
#6055
ivory



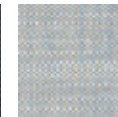
#6052
dark brown



#6050
black



#6060
navy



#6053
pale blue

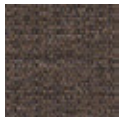


#6054
red

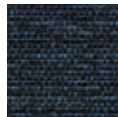
abrasion resistance: 25,000 rubs

fabric M-02 : SAGA

cotton 24% polyester 76% (BELGIUM)



#4162
brown



#4160
navy



#4163
blue



#4173
pale blue



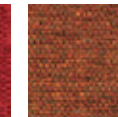
#4165
cardinal



#4164
garnet



#4167
red



#4168
orange



#4169
gray

abrasion resistance: 50,000 rubs

fabric M-03 : BOY

wool 100% (DENMARK)



#4971
deep green



#4961
green



#4964
bordeaux

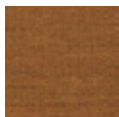


#4968
orange

abrasion resistance: 45,000 rubs

fabric M-03 : Remix 2

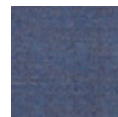
wool 90% nylon 10% (DENMARK)



#3317
yellow ochre
433



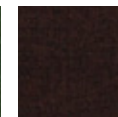
#3310
black
183



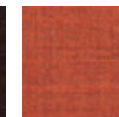
#3313
blue
743



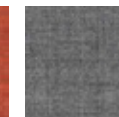
#3311
green
982



#3314
bordeaux
373



#3318
orange
632

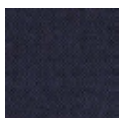


#3319
gray
143

abrasion resistance: 100,000 rubs

fabric M-04 : Field

polyester 100% (DENMARK)



#2180
navy
782



#2181
green
932

abrasion resistance: 100,000 rubs

fabric M-05 : Divina 3

wool 100% (DENMARK)

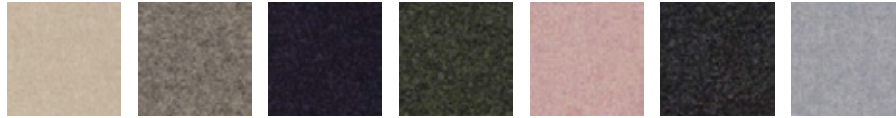


#2506 beige 224	#2510 navy 791	#2511 dark green 886	#2509 garnet 584	#2507 red 623	#2508 orange 552
-----------------------	----------------------	----------------------------	------------------------	---------------------	------------------------

abrasion resistance: 45,000 rubs

fabric M-05 : Divina MD

wool 100% (DENMARK)



#4725 ivory 203	#4722 light brown 343	#4720 navy 783	#4721 dark green 973	#4724 pale pink 613	#4729 dark gray 193	#4719 light gray 713
-----------------------	-----------------------------	----------------------	----------------------------	---------------------------	---------------------------	----------------------------

abrasion resistance: 45,000 rubs

fabric M-05 : Hero

wool 96% nylon 4% (DENMARK)



#6266 beige 231	#6262 brown 481	#6272 dark brown 191	#6260 navy 791	#6263 blue 751	#6264 pink beige 511	#6259 ivy gray 991	#6269 gray 141
-----------------------	-----------------------	----------------------------	----------------------	----------------------	----------------------------	--------------------------	----------------------

abrasion resistance: 45,000 rubs

fabric M-05 : Tonus 4

wool 90% nylon 10% (DENMARK)



#2708 orange 605	#2709 light gray 216
------------------------	----------------------------

abrasion resistance: 100,000 rubs

fabric M-05 : Hallingdal 65

rayon 30% wool 70% (DENMARK)

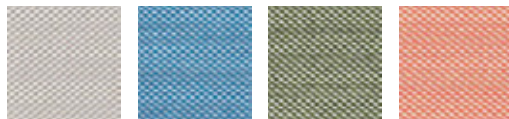


#2936 beige gray 113	#2939 gray 116
----------------------------	----------------------

abrasion resistance: 100,000 rubs

fabric M-05 : Steelcut Trio 2

wool 90% nylon 10% (DENMARK)



#2356 beige 205	#2353 light blue 733	#2351 smoke green 915	#2357 orange 515
-----------------------	----------------------------	-----------------------------	------------------------

abrasion resistance: 100,000 rubs

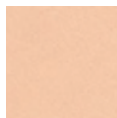
leather L-01 : leather

tanned leather

(JAPAN)



#5191
black



#5006
natural

leather L-02 : elmosoft

(SWEDEN)



#5025 white 00100	#5035 ivory 01061	#5029 reddish gray 13060	#5022 brown 33004	#5032 dark brown 93129	#5037 deep brown 93068	#5020 black 99999	#5024 red 55002
-------------------------	-------------------------	--------------------------------	-------------------------	------------------------------	------------------------------	-------------------------	-----------------------

webbing

nylon 100% (JAPAN)



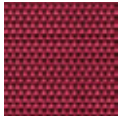
#0880
black



#0892
dark brown



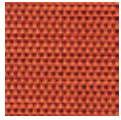
#0890
navy



#0894
garnet



#0897
red



#0898
orange

mesh

PVC covered polyester mesh (JAPAN)



#0905
white